

Family Numeracy Programme Trial Specification

Last updated: 12th November 2024

The Department for Education is inviting you to take part in an exciting set of trials in the 2024/25 academic year. The trials will engage around 20,000 learners across England and aim to generate new, high-quality evidence on what works in adult numeracy.

By taking part you will be randomly allocated to a treatment (delivering something new) or control (business as usual) group. If you are in the treatment group, it will be an opportunity to deliver something innovative that has potential to improve results for learners. If you are in the control group, you will continue to deliver your business-as-usual curriculum. Both groups are vital to the research and will receive payment for being involved. The trial is fully funded and there is an added **£500 incentive for schools** who recruit enough eligible parents onto the trial.

Interested but need more info? Express your interest: [Multiply Education Research Trials | Current Trials \(etioglobal.org\)](https://etioglobal.org/Trials/CurrentTrials)

Ready to sign up? Complete this registration form by - [6th December, 2024](#)

<https://forms.office.com/e/tVAUKrHTj3>

The Trial

This trial will test the impact of delivering maths aligned to Key Stage 1 Year 2 and Functional Skills Maths Level 1, to parents of Year 2 in primary school settings. The sessions will help parents to support their child's maths learning. Through taking part, parents will also increase their own maths confidence and willingness and interest to progress to more formal maths provision as well as increase confidence in employment and their potential employability.

The trial will run as a Randomised Controlled Trial (RCT), a type of evaluation that measures the impact of an intervention or 'treatment' using randomisation. The schools involved have a 50% chance of being randomised into the treatment group and the other 50% will be randomised into the control group. Those in the treatment group will receive the intervention in Spring 2025 (outlined below) and those in the control group will be put on a waitlist and will receive the intervention when the trial delivery ends (in the next academic year, beginning Autumn 2025).

Randomisation

Participating schools will issue parents from Key Stage 1 Year 2 with information about the trial and/or host a briefing event led by the training provider (Campaign for Learning). Parents will then be given the opportunity to opt in. As randomisation will be at school

level, parents will be made aware that there is a 50-50 chance of receiving the intervention in the 2024-25 academic year or the 2025-26 academic year, when their child is in Year 2 or starting Year 3.

Randomisation will be done after parents have signed up to the programme. Before randomising schools, we need to know there are parents in the school who are interested to be part of family learning programme.

The Intervention

The intervention has been developed by Campaign for Learning (who lead the National Centre for Family Learning). The intervention is a family learning numeracy programme for adults and children in Key Stage 1 Year 2 to build maths confidence and understanding together. The programme is designed to introduce concepts, build skills and confidence in maths for adult learners.

This approach is a series of structured, in-person group learning sessions designed for adults and their children to bolster both numeracy learning and family learning. The sessions align learning outcomes for KS1 with Level 1 functional skills, although adults are not required to be qualified only to Level 1 to take part.

This intervention targets both adults and children: adults as both parents and carers, as numeracy-focused learners and as employees within the workplace; and children as family members and learners.

What we hope to achieve

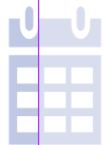
- As learners, we hope adults will boost their confidence in numeracy vocabulary and concepts
- As parents and carers, we hope adults will be able to better embed maths learning in everyday tasks for their children, as well as better work with school to manage and co-facilitate child learning.
- As employees, we hope adults will see an increase in maths-related confidence and aptitude for maths-based work tasks.
- As young learners, we hope children will see an increase in confidence and comprehension, leading to increased attainment in Maths at school.

What will be delivered?

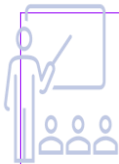
The intervention will be delivered to the treatment group in the Spring term 2025 (beginning in Spring 2025 and lasting until the start of Summer term 2025). The intervention will be delivered to the control group in the next academic year (Autumn 25).



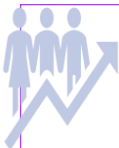
Tutors and Practitioners will attend 1.5 hours of online training on the intervention



Trial starts January 2025 and runs throughout the Spring Term



Tutors deliver 6 hours at school to parents and children and 6 hours will be for home learning.



Data collected through individual learner record and surveys

The intervention is 12 hours in total, comprising 6 x 1 hour in-school sessions and 6 x 1 hour sessions of home learning. The hour sessions will be broken into two, focusing on 30 mins with the adults only and 30 mins where the children join the adults in a family practical session.

Who can take part?

Eligibility criteria for Providers

- Family Learning tutors/ Practitioners, external to the primary school (likely to be adult education maths teachers from FE colleges) will be trained to deliver the approach.
 - For example, you may be a Further Education College or Local Authority with Family Learning Tutors that go into Primary schools to deliver Family Learning classes.
- The programme is designed to take place within the schools that children of parents and carers already attend. This will facilitate engagement where there is

already an existing relationship with the primary school and the nature of routine school attendance should simplify joining the programme.

- We recommend at least eligible 8 families per school to ensure quality of delivery but we will consider all schools that apply on a case-by-case basis.

Eligibility criteria for schools

- Primary schools willing to host Family Numeracy sessions at the start or end of the school day, and willing to release children to join the last half of the sessions from their classes.
- Primary schools with Year 2 (KS1) classes and parents/carers willing to take part.
- Primary schools should be willing to recruit parents onto the trial, aiming to recruit at least 8 parents (we will still consider you for the trial if you recruit less parents).

Eligibility criteria for Participants

Parents/carers who:

- Are aged 19+ years
- Do not have a Level 2 qualification in maths
- Have a child currently in Key Stage 1 Year 2
- Have not taken part in a family numeracy programme before.

Training and Briefing Sessions

July 2024 - Informational Session for Providers and Senior Leaders

- When: 3, 9 12, 17, 23, 24 July 2024
- Where: Online
- Duration: 1.5 hours
- Who: Aimed at senior leaders in provider settings, family learning tutors, family learning managers, managers who will coordinate the trial with schools.
- Recording: [Family Numeracy trial part 1 recording.mp4](#)

This session will be run throughout July during the dates specified, you will be able to choose a date that is convenient for you. The session will be delivered online by Campaign for Learning with the aim to ensure Providers understand:

- How to engage with parents
- How to set up the course/ intervention
- What's involved when running the intervention
- Benefits of taking part

September 2024 – School Briefing Session

- When: 18th Sept 2024
- Where: Online and Recording available
- Duration: 20-30 minutes
- Who: for schools, headteachers, Y2 and Y3 teachers.
- [Watch the recording here](#)

This session will be run online by Campaign for Learning and will be recorded for any schools who cannot join. The session aims to brief the school of how the trial will run in their school and a chance for any questions.

November-December 2024- Training for all tutors

- When: Nov-Dec
- Where: Online
- Duration: 1.5 hours
- Who: for all Family Learning Maths tutors

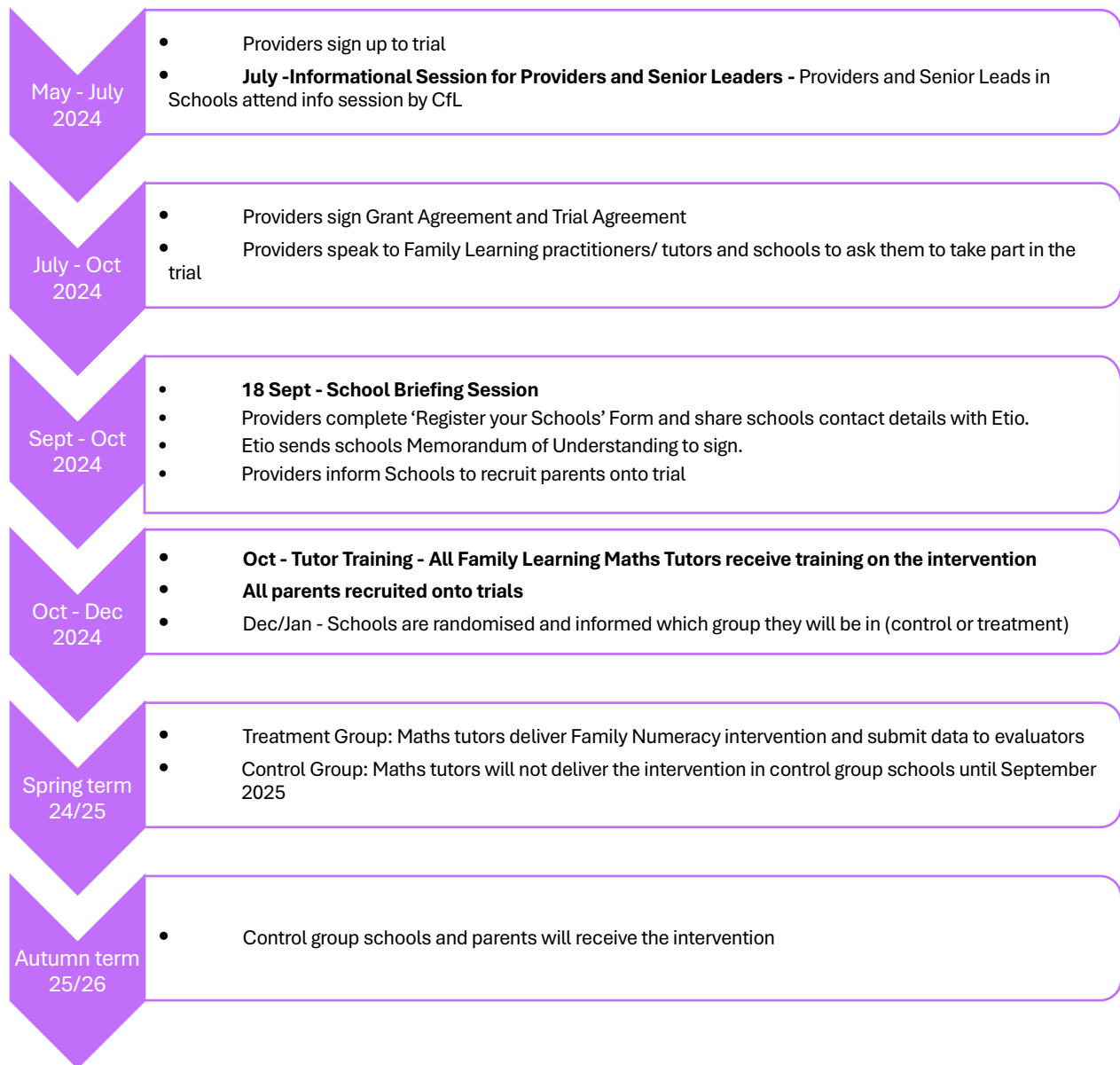
All Family Learning Practitioner/ Maths Tutors will receive training from Campaign for Learning (both Treatment and Control groups). Tutors and Practitioners will be able to choose a date that suits from the dates specified.

The programme will be delivered by family learning tutors and practitioners from an external training provider/family service who will deliver this course following a comprehensive package of training (professional development) that explains the approach and its rationale.

Register to one session:

- [12th November 2024, 09:30-11:00](#)
- [15th November 2024, 09:30-11:00](#)
- [20th November 2024, 09:30-11:00](#)
- [20th November 2024, 13:30-15:00](#)
- [22nd November 2024, 09:30-11:00](#)
- [25th November 2024, 09:30-11:00](#)
- [29th November 2024, 09:30-11:00](#)
- [5th December 2024, 13:30-15:00](#)
- [17th December 2024, 09:30-11:00](#)
- [19th December 2024, 13:30-15:00](#)

Timeline



How is data captured?

The research will capture data from learners and tutors by:

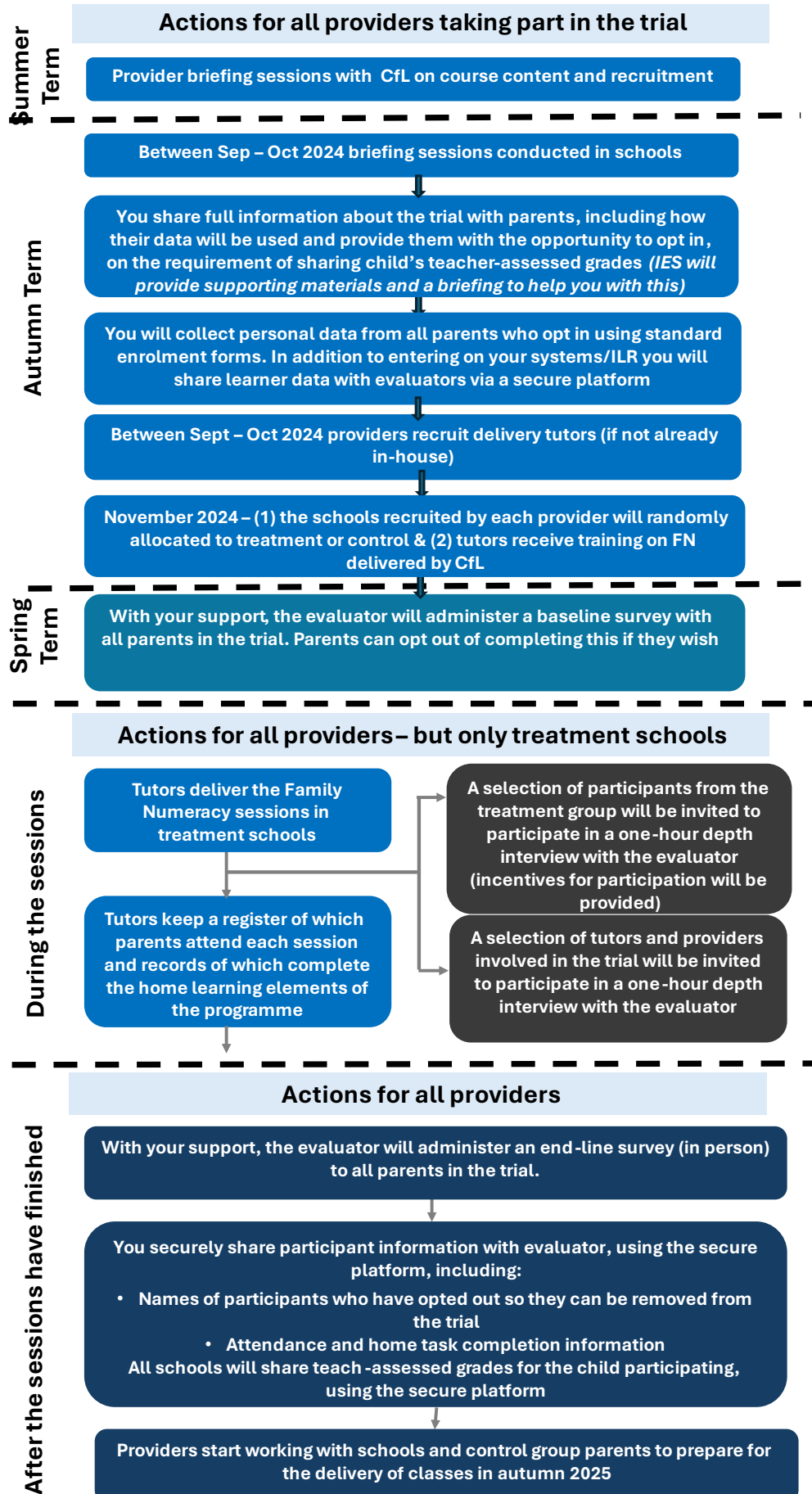
- Observations of tutor training sessions
- Baseline and endline surveys of parents in treatment and control groups
- Endline survey of teachers in treatment schools
- Endline survey of tutors in treatment schools
- Child data collection in the form of teacher assessments of progress against Key Stage 1 Maths benchmarks

Additional optional activities for the learners and teachers which we would expect providers support in promoting:

- Qualitative interviews with parents in treatment and control groups
- Qualitative interviews with tutors in treatment group
- Qualitative interviews with teachers in treatment and control groups.

What is expected from a Provider?

- Join a Provider Briefing Session running through July 2024 – if you missed it, here's a recording: [Family Numeracy trial part 1 recording.mp4](#)
- Confirm/ Recruit Family Learning Practitioners/ Tutors to take part in the trial
- Share the Schools Briefing Session with schools to encourage them to take part: [Watch the recording here](#)
- Confirm/ Recruit Primary Schools to take part in the trial by **December 6th, 2024**
- Ensure that Family Learning tutors attend the training in **October - December 2024**
- Support Primary schools in recruitment of parents onto the trial by **January 8th, 2025**
- Share specific trial documents with teachers and learners (ie. Opt out information, ethics and intervention materials) and collect lists of any learners that opt out
- Report to Etio on recruitment numbers and meet with Etio to raise any risks to recruitment or delivery
- Collect and share attendance data of learners that attend the intervention sessions
- Ensure the delivery of the intervention as specified in the protocol and associated materials



Funding and Incentives

Funding

As a provider, whether your schools are in the treatment or control group, you will receive the same funding.

As a provider, you will receive:

- £7.20 x GLH x number of adult learners (plus area/disadvantaged uplift)
- 10% admin premium

Worked example:

- Guided Learning Hours = 12
- Assumed number of adult learners per school (parent/ carers) = 10
- Provider recruited/confirmed 10 schools will take part

$£7.20 \times 12 \text{ GLH} \times 100 \text{ adult learners} = £8640$

$10\% \text{ admin premium} = 10\% \text{ of } £8,640 = £864$

Plus £1000 one-off payment for taking part in the trial.

Incentives

- For schools: schools that recruit at least 8 eligible parents will receive a £500 incentive.
- For tutors: all tutors will receive free CPD including the training materials and lesson materials to deliver to schools from Spring term 2025 if the school is in the treatment group or from Autumn term 2025 if the school is in the control group.
- For Local Areas: early / emerging findings will be shared as they become available. For providers: A series of optional informational/best practice seminars will be run throughout the trials.
- For learners (offered by Evaluators): a £30 shopping voucher will be offered as an incentive for learner participation in depth interviews.

FAQs

Please find more FAQs on the Family Numeracy Programme trial tab here: [Multiply Education Research Trials | Current Trials \(etioglobal.org\)](https://etioglobal.org/Education-Research-Trials/Current-Trials)

Do I have to already be involved in the Multiply programme to participate?

No - local areas and providers do not have to be a recipient of Multiply main programme funding to be in the RCTs.

When will I know if I am in the treatment or control group? / Do I have a choice?

Allocation to treatment or control group is done at random so we are not able to meet preferences for one or the other groups. Allocation will happen in the autumn term (2024) and participants will be notified quickly after. Training for tutors will happen in October in time for delivery in January 2025. There are perks of being involved in both, including financial remuneration (see above).

Can I take part in more than one trial?

Yes, we welcome expressions of interest to participate in more than one trial. There are perks of being involved in both, including financial remuneration (see above).

What do I need to do and by when?

If you want to be involved, we would love to hear from you. To register your interest or for more information please visit: [Multiply Education Research Trials | Home \(etioglobal.org\)](https://etioglobal.org/multiply-education-research-trials/). We will be accepting applications until October/November 2024.

Useful links

Interested but need more info? Express your interest: [Multiply Education Research Trials | Current Trials \(etioglobal.org\)](https://etioglobal.org/multiply-education-research-trials/)

Ready to sign up? Complete this registration form [by 6th December \(extended deadline\)](https://forms.office.com/e/tVAUKrHTj3?origin=lprLink)

<https://forms.office.com/e/tVAUKrHTj3?origin=lprLink>

